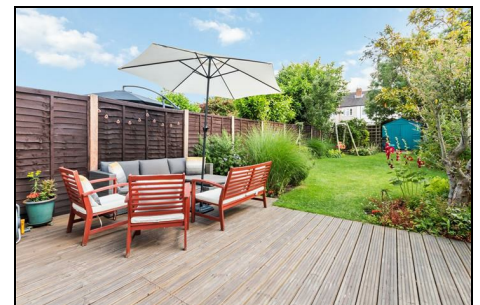
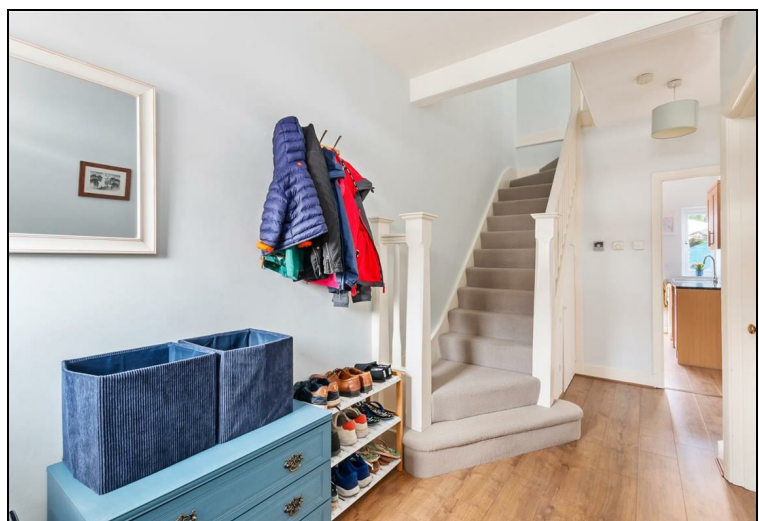
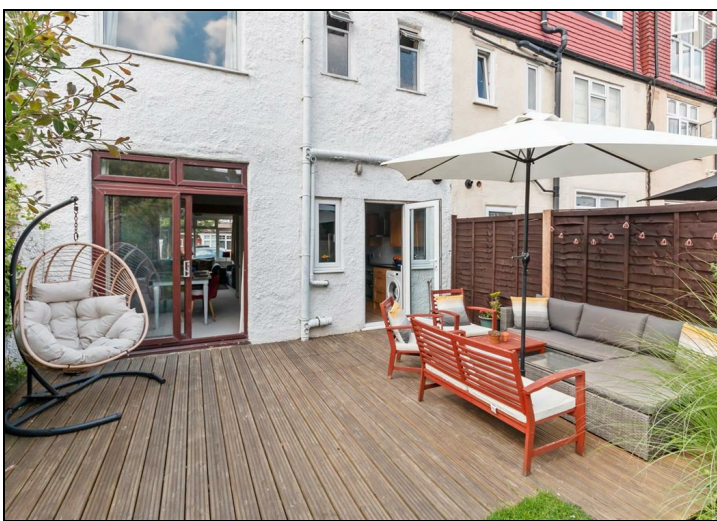


Greenway Raynes Park, SW20 9BH

£750,000 Freehold



This superb and well presented 1080 sqft **THREE DOUBLE BEDROOM** 1930's Mid Terrace "Blay" House has a lovely 71'ft South Facing Garden and off street parking to the front. Located on a desirable residential road only 0.7 Miles to both Raynes Park Station and Motspur Park Station. Offering fantastic potential to extend to the loft and rear s.t.p.p.



Although these particulars are believed to be correct, their accuracy is not guaranteed and they do not form part of any contract.

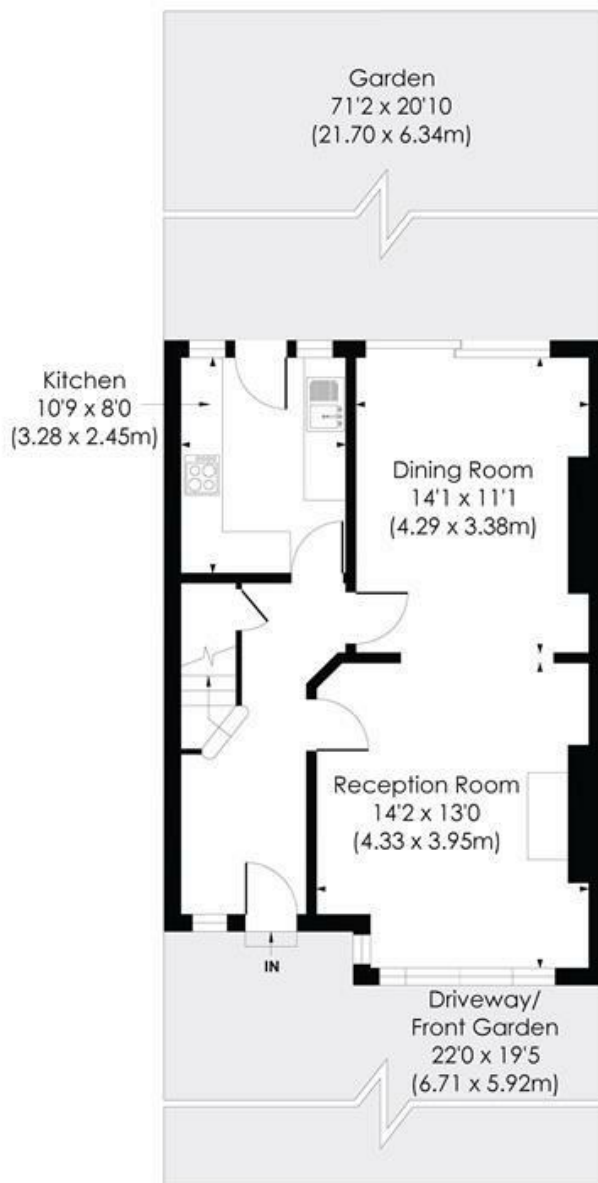
**Celebrating 30 years
of successful Sales and
Lettings in Merton**



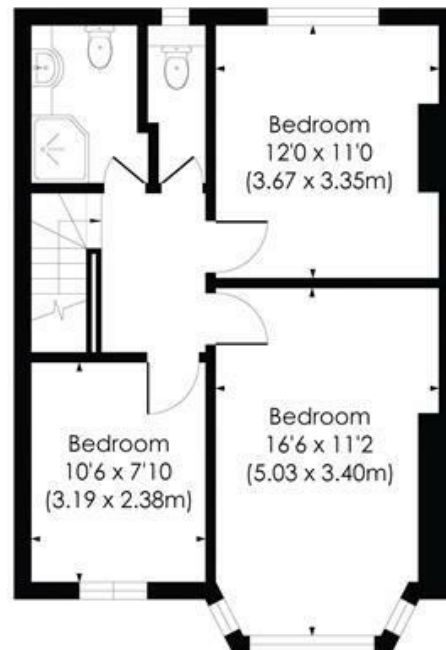
GREENWAY, SW20

Approx. Gross Internal Floor Area

1080 Sq. ft/100.37 Sq. m



GROUND FLOOR

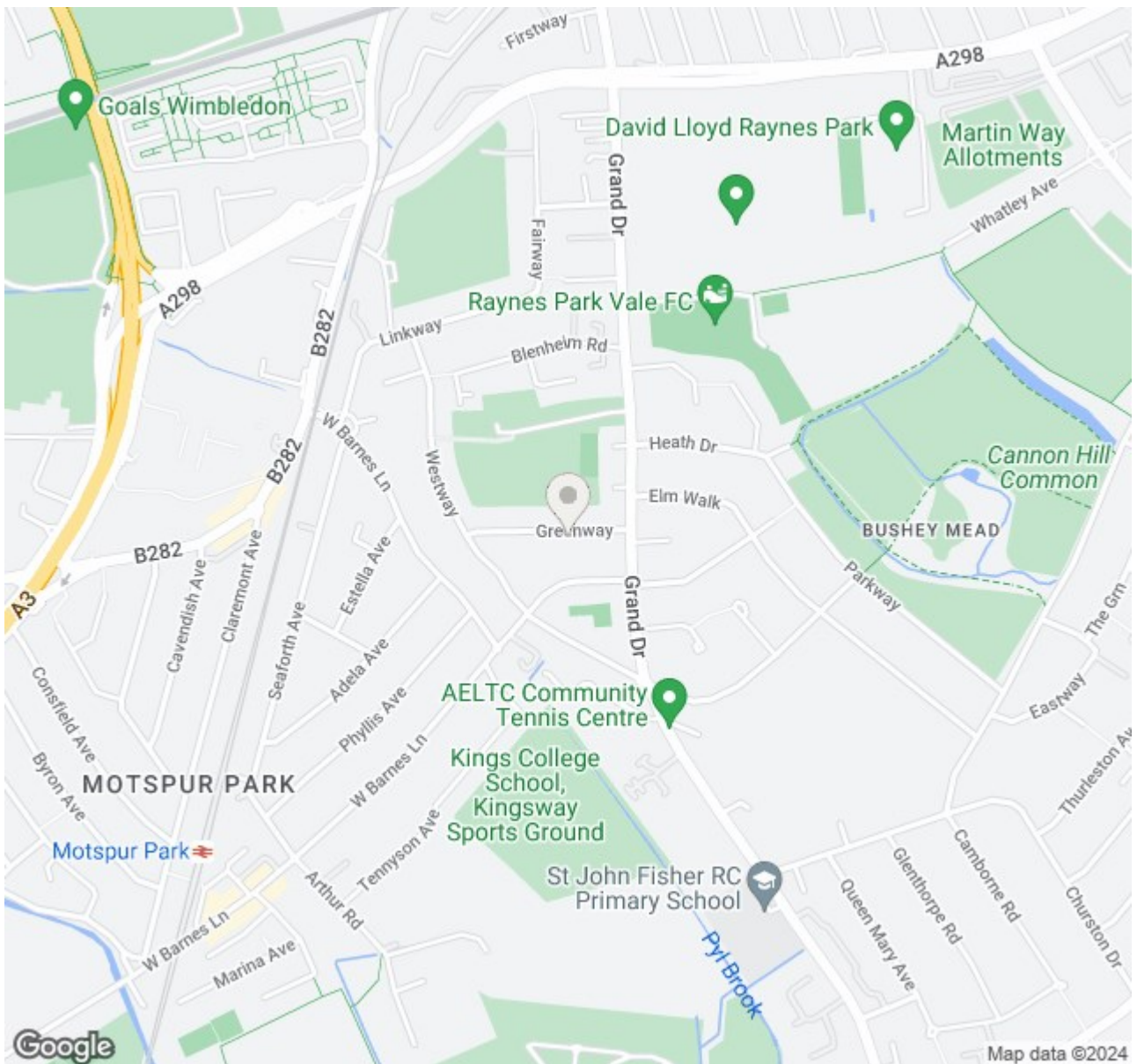


FIRST FLOOR

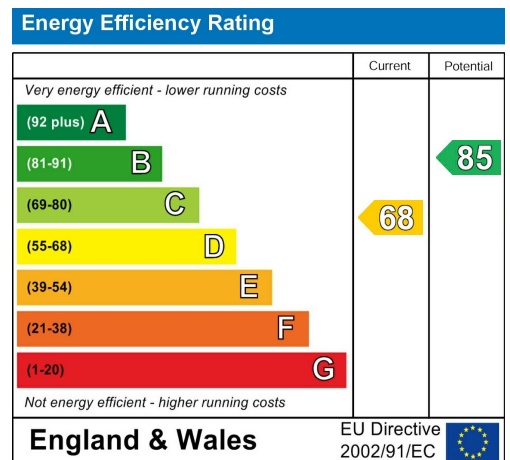
© Pixangle Property Marketing Ltd. info@pixangle.com Tel: 0208 870 2118

pixangle
PROPERTY MARKETING

This floor plan has been prepared for the purpose of illustration only in accordance with the latest RICS code of measuring practice and is not to scale. All measurements and areas are approximate and whilst every effort has been made to ensure the accuracy of the plan contained here, no responsibility is taken for any error, omission or misstatement.



- Three Double Bedroom - 1080 sqft
- 1930's Mid Terrace "Blay" House
- Lovely 71'ft South Facing Garden
- Off Street Parking to Front
- 0.7 Miles to Raynes Park Station
- 0.7 Miles to Motspur Park Station
- Potential to Extend S.T.P.P
- Well Presented Family Home
- EPC - TBC
- Council Tax Band - D



For Free Mortgage Quote and Best Mortgage Rates, call Ellisons Mortgage Advisor on 0208 944 9595



Although these particulars are believed to be correct, their accuracy is not guaranteed and they do not form part of any contract.

Celebrating 30 years of successful Sales and Lettings in Merton

